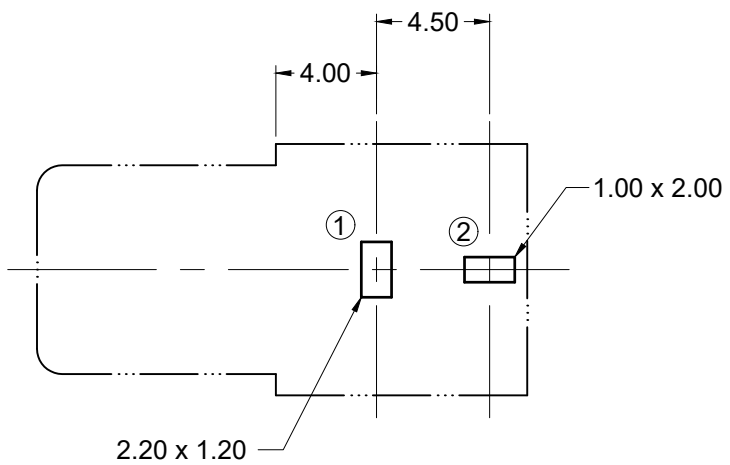


Part Number	Color
KLPX-0848A-2-B	Black
KLPX-0848A-2-O	Orange
KLPX-0848A-2-R	Red
KLPX-0848A-2-W	White
KLPX-0848A-2-Y	Yellow
KLPX-0848A-2-GR	Green
KLPX-0848A-2-BL	Blue



Recommended PCB Layout

Materials and Finish

Housing:
PBT Thermoplastic
UL 94V-0 rated

Contact Material: brass

Contact Plating:
barrel, pin 1: Nickel
pin 2: Tin

Mechanical Characteristics

Insertion Force:
0.3kg - 3.0kg

Extraction Force:
0.3kg - 3.0kg

Durability: 5000 mating cycles min.

Electrical Characteristics

Contact Resistance:
Before Test: 30milliohms max.
(Initial)

Insulation Resistance:
100 Megohms min.
at 500V DC

Withstanding Voltage:
500V AC RMS for 1 minute

Operating Temperature:
-25°C to +80°C

Tolerances

X.X ± 0.25
X.XX ± 0.15
Unless Stated
Otherwise



REV.	DATE	DESCRIPTION	REV. BY	CHK. BY	DRAWN BY	DATE
A2	01/31/06	ECO 06-006	R. Aguirre	H. MA	H. MA	6/22/05
A3	03/12/08	ECO #08-020	R. Aguirre	H. Ma		
A4	04/08/08	Add Options	S. Vien	H. MA		UNITS mm
A5	01/20/14	ECO #14-004	W. Cook	H. MA		
A6	08/10/18	Update Address	D. Shehan	N/A		
A7	12/10/2020	ECO # 20-036	D. Shehan	C. Kelleher		

KLPX-0848A-2-x

RCA Jack, Right Angle

Through-hole, RoHS Compliant

